



FLAMEVision FV300 IR Array Flame Detector

Current flame detection technologies have drawbacks: UV/IR detectors have good false alarm immunity, but limited detection range, high power consumption and problems if the field of view is obstructed by mist or smoke. Single IR detectors can only offer a compromise between detection sensitivity and blackbody rejection.

Triple IR detectors achieve long range detection but sensitivity is significantly reduced in the presence of blackbody sources. The continued search for sensitive and reliable flame detection with nuisance alarm immunity has resulted in the revolutionary FLAMEVision FV300.

Features

- FLAMEVision offers enhanced flame detection
- FLAMEVision detects and pinpoints location of fire within the field of view
- High nuisance alarm immunity
- FLAMEVision has long range and consistent field of view
- Simplified installation and commissioning
- Optional colour CCTV camera can show the location of a fire within the field of view of the protected area
- Heater option to reduce affect of moisture on window
- ATEX Certificate - Baseefa07ATEX0178X
IECEX Certificate - BAS07.00488X
FM Listed
- IP66 and IP67 Ingress Protection

Description

Traditional flame detection solutions have a wide range and deep field of view. This means when there is an alarm, the fire could be anywhere in a large area, possibly requiring staff to physically investigate, with the resultant time and safety implications.

FLAMEVision pinpoints the location of the alarm incident(s) so that the right decision can be made. FLAMEVision offers a major improvement in both flame detection capability and immunity to nuisance alarm sources over triple IR detectors.

Comprehensive self-test routines of sensors and electronics along with reporting of optical integrity help reduce spend on unnecessary maintenance. The FLAMEVision has a proportional analogue output current (4 to 20 mA), and an RS485 serial data port suitable for network connection using a MODBUS protocol, to meet demands for integration into non fire panel control systems.

Array Technology

The FLAMEVision FV300 utilises a 16x16 array, providing 256 IR sensors. This use of array technology provides additional benefits such as:

- Ability to detect up to 4 concurrent fire events spread across the field of view of the detector
- Identification of the location of fires within the field of view of the detector
- Ability to discriminate between flame and non-flame sources
- Transmission of location information to an operator control centre, including overlay on video image (CCTV)
- Detection range is not affected by blackbodies in the field of view

CCTV link

In addition to superior IR flame detection, the FLAMEVision can provide an optional CCTV video output that can be connected to any standard CCTV system.

- Built in CCTV enables superior information for fire incidents
- Viewing of CCTV is independent of automatic fire detection
- CCTV can be used for wider surveillance and incident recording within the FLAMEVision's field of view
- Increased user confidence, control and view of incident and of risk area
- Allows multiple users to view image via multiple monitors or computers

Area Masking

What if flames might be normal on site? Unlike traditional flame detectors, the FLAMEVision has the ability to mask a defined area from detection, within the field of view. This is configured in the field. Benefits of Area Masking are:

- Avoidance of nuisance alarms & costly shutdowns
- Maintain full confidence in system
- Alarms are more likely to be taken seriously by staff

Part Numbers

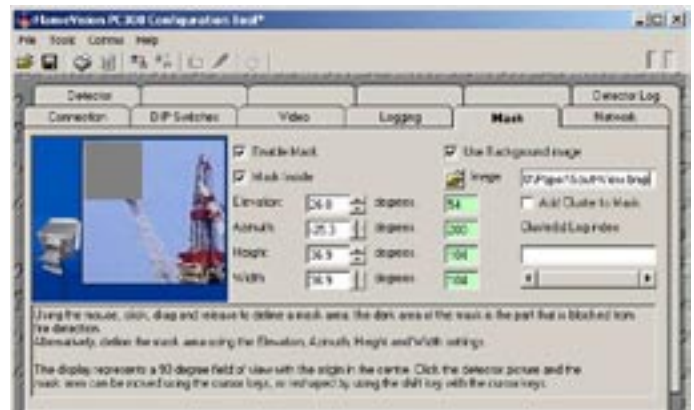
516.300.006	FV311S cable gland entries - no camera
516.300.008	FV311SC cable gland entries - PAL camera
516.300.007	FV311SC-N cable gland entries - NTSC camera
516.300.055	FV312S sealed back box - no camera
516.300.057	FV312SC sealed back box - PAL camera
516.300.056	FV312SC-N sealed back box - NTSC camera
516.300.001	MB300 mounting bracket
516.300.002	WH300 weather hood
516.300.021	WT300 walk test tool
516.300.022	CTI300 off-line configuration tool
516.300.006	MK300 field spares kit



Highlighting the fire location within the CCTV picture view



What if flames might be normal on site?



FLAMEVision supports masking of defined area with a simple to set-up mask of an area in the field of view.

Option 1: Any fire in the masked area is ignored.

Option 2: Only fires in the masked area will cause an alarm.