

Warning System Ancillaries – Audio



A comprehensive range of audio ancillaries for alarm and occupant warning and intercommunication systems. From microphones to speakers, all your warning system requirements are available, ensuring your ability to supply products to meet your customers' needs.

EA0036/37/38/39 'One-Shot' Low-Profile 100V Line Speaker - AS 7240.24



The EA0036/37 are low-profile versions of the EA0025 one-shot speakers. They have been engineered to meet the requirements of evacuation and occupant warning systems. All components of the fixture are manufactured from high quality, long lasting, flame retardant material and tested to AS ISO7240.24:2015.

| Specifications | |
|----------------------------|--|
| Power rating | 5W |
| Power taps | 0.33,0.66,1.25,2.5,5W |
| SPL | 89dB 1W @ 1m |
| Frequency response | 100Hz - 15kHz |
| Ceiling cutout | 140mm diameter |
| Mounting depth | 65mm (incl c.tile) |
| Dimensions (mm) | 159 dia. (grille) x 70H |
| Ambient temperature | -25°C to +55°C |
| Weight | 710g |
| ActivFire Listed | AFP-3426 (For C2160 /C2161) AFP-3429 (For C2260A/C2261A) |
| Part numbers | EA0036 5W Wht (C2160) EA0037 5W Blk (C2161-not shown) EA0038 5W White Metal Grill (C2260A) not shown EA0039 5W Black Metal Grill (C2261A) not shown |

EA0041/42 200mm 100V Line Speaker - AS 7240.24



The EA0040/41 is a 200mm ceiling mount speaker certified to the AS ISO7240.24 standard for fire and evacuation announcements in buildings. Each speaker is fitted with a fire retardant speaker/transformer dome and is fitted with sealed gland cable entries and terminal blocks for easy on site termination. The speaker utilises the one-shot 'snap fit' mounting system.

| Specifications | |
|--------------------------------------|--|
| Power rating | 5W (100V line) |
| Power taps | 0.33W, 0.66W, 1.25W, 2.5W, 5W |
| SPL | 94dB (1W @ 1m) |
| Frequency response | 100Hz - 15kHz |
| Mounting hole dimensions (mm) | 246mm diameter 266 dia. x 108Dmm |
| Ambient temperature | -25°C to +55°C |
| Weight | 1.25kg |
| ActivFire Listed | AFP-3573 |
| Part numbers | EA0041 5W White (CF2134) EA0042 5W Black (CF2135) |

EA0043 200mm 100V 15W Ceiling EWIS Speaker - AS 7240.24



EA0043 is a ceiling mount speaker certified to the AS ISO7240.24 standard for fire and evacuation announcements in buildings. Each speaker is fitted with a fire retardant speaker/transformer dome and is fitted with sealed gland cable entries and terminal blocks for easy on site termination. The speaker utilises the one-shot 'snap fit' mounting system.

| Specifications | |
|------------------------------|---|
| Power rating | 15W |
| Power taps | 1.25, 2.5, 5,10, 15W |
| SPL | 104dB (15W @ 1m) |
| Frequency response | 100Hz - 15kHz |
| Dimensions (mm) | 266mm dia. x 108mm depth |
| Weight | 1.95Kg |
| Operating temperature | -25°C +55°C |
| Relative humidity | Up to 95% (non-cond.) Indoor applications only |
| ActivFire Listed | AFP-3572 |
| Part numbers | EA0043 15W Wht (C2142) EA0044 15W black (CF2143) |

EA0034/40 Ceiling Tile Support Rings



Designed to be installed with the one-shot ceiling speakers, these ceiling ring supports the ceiling tile to minimise sag and reduce damage to soft tiles. Recommended for use with mineral fibre and acoustic ceiling tiles. With a split ring design for easy installation, this device is suitable for use with 100mm speakers.

Note: When installing the lip must face upwards so that the ring sits flat on top of the ceiling tile.

| | |
|---------------------|---|
| Part numbers | EA0034 Split ring plastic EA0040 - For one-shot speakers |
|---------------------|---|

EA0035 Ceiling Speaker Support Pan



Designed to be installed with the One-Shot ceiling speakers, these pans support the ceiling tile to minimise sag and reduce damage to soft tiles. Fits inside the "T-bars" for maximum support for the tile. Recommended for use with mineral fibre and acoustic ceiling tiles.

Note: When installing, the lip must face upwards so that the pan sits flat on top of the ceiling tile.

| | |
|--------------------|--------|
| Part number | EA0035 |
|--------------------|--------|

EA0027/28 100V Line 10W Horn Speaker - AS 7240.24



The EA0027/28 range of horn speakers has been engineered to meet the requirements of evacuation and occupant warning systems. The high efficiency speaker and transformer combination ensures high Sound Pressure Level, wide frequency response, superior speech intelligibility and reproduction for fire alarm and evacuation warning systems. All components of the fixture are manufactured from high quality, long lasting, flame retardant material and tested to AS ISO7240.24:2018. On-site installation is simple and straight forward with oversized cable glands and terminal blocks.

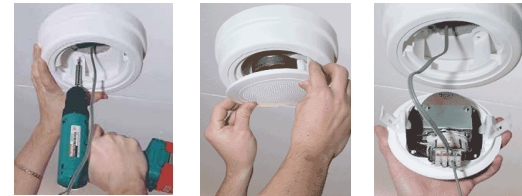
| Specifications | |
|---------------------------|--|
| Power rating | 10W |
| Power taps | 1.25, 2.5, 5, 7.5, 10W |
| SPL | 104dB 1W @ 1m, 112dB 10W @ 1m |
| Frequency response | 100Hz - 12.5kHz, 500Hz - 6.3kHz 0±5dB |
| Dispersion angle | 40° to 130° |
| Line monitoring | 22uF bipolar cap. |
| Mounting depth | 259mm |
| Weight | 1.4kg |
| Ingress protection | IP66 |
| ActivFire Listed | AFP-3684 |
| Part numbers | EA0027 10W Wht (CF2050W) EA0028 10W Blk (CF2050B-not shown) |

EA0029/30 100V Line 100mm Surface Mounted 5W Speaker - AS 7240.24



EA0029 is designed to mount directly to the underside of concrete slabs or inaccessible ceilings. The housing is surface mounted with concealed internal fixings. Speaker cable entry can be either from the rear, or via surface mounted conduit (four 19mm conduit knockouts are provided). The speaker is fitted with a 100V line transformer tapped at 0.33, 0.66, 1.25, 2.5 and 5W and includes 4 way wire protected terminal strip and a 22µF bipolar capacitor for line monitoring. This speaker features 'one-shot' design, simply snap-fits in seconds to the surface mounting ring, reducing installation time considerably. It is tested to AS 7240.24 and listed as compliant.

| Specifications | |
|------------------------------|--|
| Power rating | 5W |
| Power taps | 0.33,0.66,1.25,2.5,5W |
| SPL | 95dB, 5W @ 1m |
| Frequency response | 100Hz - 15kHz |
| Dimensions (mm) | 210 dia. x 67mm |
| Weight | 810g |
| Operating temperature | -25°C to +55°C |
| Relative humidity | up to 95% (non-cond.) Indoor Applications Only |
| ActivFire Listed | AFP-3425 |
| Part numbers | EA0029 5W Wht (CF0703) EA0030 5W Blk (CF0704-not shown) |



Step 1:
Secure Housing to
Mounting Surface

Step 2:
Terminate
Cable

Step 3:
Fit Speaker
to Housing

EA0031/32 100V Line 200mm Surface Mounted 5W Speaker - AS 7240.24



EA0031 is designed to mount directly to the underside of concrete slabs or inaccessible ceilings. The housing is surface mounted with concealed internal fixings. Speaker cable entry can be either from the rear, or via surface mounted conduit (four 19mm conduit knockouts are provided). The speaker is fitted with a 100V line transformer tapped at 0.33, 0.66, 1.25, 2.5 and 5W and includes 4 way wire protected terminal strip and a 22µF bipolar capacitor for line monitoring. This speaker features 'one-shot' design, simply snap-fits in seconds to the surface mounting ring, reducing installation time considerably. It is tested to AS 7240.24 and listed as compliant.

| Specifications | |
|------------------------------|--|
| Power rating | 5W |
| Power taps | 0.33,0.66,1.25,2.5,5W |
| SPL | 95dB, 5W @ 1m |
| Frequency response | 100Hz - 15kHz |
| Dimensions (mm) | 310 dia. x 85mm |
| Weight | 1.36kg |
| Operating temperature | -25°C to +55°C |
| Relative humidity | up to 95% (non-cond.) Indoor Applications Only |
| ActivFire Listed | AFP-3295 |
| Part numbers | EA0031 5W Wht (CF0715) EA0032 5W Blk (CF0716-not shown) |

EA0033 100V Line 200mm Surface Mounted 15W Speaker - AS 7240.24



EA0033 is designed to mount directly to the underside of concrete slabs or inaccessible ceilings. The housing is surface mounted with concealed internal fixings. Speaker cable entry can be either from the rear, or via surface mounted conduit (four 19mm conduit knockouts are provided). The speaker is fitted with a 100V line transformer tapped at 1.25, 2.5, 5, 10 and 15W and includes 4 way wire protected terminal strip and a 22µF bipolar capacitor for line monitoring. Featuring a 'one-shot' design, it simply snap-fits in seconds to the surface mounting ring, reducing installation time considerably. It is designed to be AS 7240.24 compliant.

| Specifications | |
|------------------------------|---|
| Power rating | 5W |
| Power taps | 1.25, 2.5, 5, 10, 15W |
| SPL | 95dB, 5W @ 1m |
| Frequency response | 80Hz - 12kHz |
| Dimensions (mm) | 310 dia. x 85mm |
| Weight | 1.36kg |
| Operating temperature | -25°C to +55°C |
| Relative humidity | up to 95% (non-cond.) Indoor Applications Only |
| ActivFire Listed | AFP-3564 |
| Part numbers | EA0033 15W Wht (CF0720) |

EA0047/48 100V 5W Surface Mount Speaker White / Black AS ISO7240.24



EA0045/46 A surface mount fire speaker featuring flame retardant housing material and PA Driver to suit the new approval requirements. One-Shot design simply snap-fits in seconds to the surface mounting ring, reducing installation time considerably.

| Specifications | |
|---------------------------|--|
| Power rating | 5W |
| Power taps | 0.33, 0.66, 1.25,2.5, 5W |
| SPL | 97dB (5W @ 1m)CF |
| Frequency response | 100Hz - 15kHz |
| Dimensions (mm) | 280mm dia. x 80mm depth |
| Weight | 0.9Kg Indoor applications only |
| ActivFire Listed | AFP-3686 |
| Part numbers | EA0045 5W Wht (CF0705) EA0046 5W black (CF0706) |

EA0045/46 10W 100V EWIS IP66 AS ISO7240.24 Fire PA Sound Projector



This sound projector is primarily used for fire and evacuation systems where a high degree of speech articulation and program clarity is paramount. Typical applications include schools, train and bus stations, airports, car parks and plant rooms. Approved for use in fire & evacuation systems in Australia (AS ISO 7240.24:2018). The one-shot sound projector eliminates screw removal by utilising a patented twist lock mechanism, the installer simply twists off the rear cover, connects the cabling and twists the cover back on!

| Specifications | |
|------------------------------|--|
| Power taps | 1.25, 2.5, 5, 7.5, 10W |
| SPL | 100dB (10W @ 1m) |
| Frequency response | 100Hz - 15kHz |
| Dimensions (mm) | 145mm dia. x 250mm depth |
| Weight | 1.4Kg |
| Operating temperature | -25°C to +55°C |
| Relative humidity | up to 95% (non-cond.) |
| Outdoor applications | IP66 rated |
| ActivFire Listed | AFP-3748 |
| Part numbers | EA0045 10W Wht (CF1520W) EA0046 10W Black (CF1520B) |

Paging Console

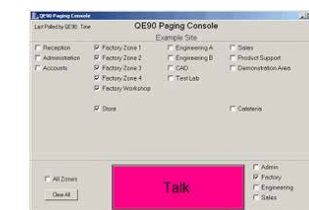


FP0539 Paging Console

There are two styles of PA Paging Console, a PC based interface and a desktop 30 zone unit. The desktop Paging Console connects to the QE90/QE20 via a 6 wire link. Multiple Paging Consoles may be "daisy chained" around a building complex, or located side by side to allow control of more than 30 zones. Each zone has an individual LED indicator to show its status and an area for labelling to suit customer requirements.

| Specifications | |
|-------------------------------|---|
| Power consumption | No zones selected <50mA All zones selected <150mA |
| Output voltage | 300 to 700mV RMS |
| Microphone voltage | 1 to 100mV |
| Frequency response | 100 to 10kHz ±3dB |
| Distortion | 10mV input, <2% |
| Dimensions (H x W x D) | 80 x 410 x 210 mm |
| Weight | 4 kg |
| Part numbers | FP0539B Paging Console FP0902 Paging Console I/F for PC SU0168/169 Microphones (Microphones ordered separately). |

Note: Where a PC forms part of an evacuation system - ie, using the PC Paging Console, a UPS should be used.



FP0902 PC Paging Console interface

FP0938 Warden Intercom Point Phone



Designed specifically for use in Emergency Warning Systems, Warden Intercom Point (WIP) phones are used to communicate between floor wardens and the master Emergency Evacuation Panel. When the handset is lifted, the WIP phone automatically rings the Emergency Evacuation Panel.

When the Panel calls the WIP, the call tone sounds through the speaker in the body of the phone. When the handset is lifted, it automatically switches from the speaker in the body to the speaker in the handset. Compatible with Vigilant QE20 & QE90 Emergency Intercommunication System.

| Specifications | |
|-------------------------------|-----------------------------|
| AC impedance | 600 Ohms (off-hook) |
| Call tone | > 82dB 1W/1m |
| Ambient temperature | -10°C to +50°C |
| Terminations | Screw, suit 0.75mm to 1.5mm |
| Material | Red impact resist. ABS |
| Dimensions (H x W x D) | 215 x 70 x 70 mm |
| Part number | FP0938 |

SU0169 Desktop Microphone



The SU0169 Paging microphone is a desktop dynamic microphone with a cardioid polar pattern. It features a short-off press to talk switch with an open-off type extra switch. It has low handling noise and a 600 ohm balanced output impedance. The SU0169 is finished in a grey ABS body with a zinc plated wire mesh head. Compatible with FP0539 and FP0902 Paging Consoles.

| Specifications | |
|-------------------------------|---------------------------|
| Polar pattern | Cardioid (unidirectional) |
| Output impedance | 600 Ohm (bal. @ 1kHz) |
| Rated sensitivity | -58dB (1kHz, OdB=1 V/Pa) |
| Frequency response | 100 Hz to 10kHz |
| Cable | 2 core shielded +2 core |
| Cable length | 2.5m |
| Termination | 5 pin DIN plug |
| Dimensions (H x W x D) | 215 x 100 x 150mm |
| Part number | SU0169 |

FP1135 Isolation Amplifier



The FP1135 Isolation Amplifier connects to an existing 100V speaker line and reproduces this signal at up to 60W load on a separate supervised 100V line. It is suitable for use with speech, music and warning tones. The 100V output line from the amplifier is electrically isolated from the input 100V line, thus separating noise or other signals on the input line from the output. The Isolation Amplifier requires a nominal supply of 27Vdc.

| Specifications | |
|-------------------------------|--------------------|
| Supply voltage | 19.6V to 28.8Vdc |
| Quiescent current | 170mA1 |
| Active current | 93dB 1W @ 1m |
| Input signal | 100V rms @ 1W max. |
| Output voltage | 100V rms |
| Output power | 60W rms2 / 25W3 |
| Dimensions (H x W x D) | 240 x 295 x 80 mm |
| Part number | FP1135 |

1. No speech or background music
2. Tones
3. Speech/music

100V Line Audio Attenuators



A2260
10W Models
and 40W Models

These 100V line audio attenuators install in a standard electrical flush box or mounting block. Screwdriver terminals enable a simple and neat connection. Models for 10W, 40W and 100W are available with an override relay facility. With fire evacuation systems it is necessary to override the attenuator setting to broadcast emergency signals at full volume. The override relays can be configured to operate in two modes. The standard mode requires 24Vdc to be applied to the relay coil to enable the volume setting. The fail-safe mode switches the attenuator off when 24Vdc is removed.

| Specifications | |
|---------------------------------|----------------------------------|
| Power rating (100V line) | 10W 40W 100W |
| Attenuation (dB) | 0 to 26.3 0 to 33 Relay Override |
| Operation voltage | 24Vdc typical |
| Wall box size | 1 gang 1 gang 2 gang |
| Part numbers | A2260 (10W) A2265 (40W) |

SU0168 Gooseneck Microphone



The SU0168 Gooseneck Paging Microphone is a dynamic microphone with a cardioid polar pattern. This elegant gooseneck microphone features smooth, brilliant sound with excellent ambient noise control and feedback rejection. Its screw base is suitable for mounting on equipment or permanent desk mounting. Supplied with mounting kit for FP0539 Paging Console. It can be used with FP0902.

| Specifications | |
|---------------------------|---------------------------|
| Polar pattern | Cardioid (unidirectional) |
| Output impedance | 600 Ohm (bal. @ 1kHz) |
| Rated sensitivity | -80dB (1kHz, OdB=1 V/Pa) |
| Frequency response | 150Hz-12kHz |
| Part number | SU0168 |

About Johnson Controls:

At Johnson Controls (NYSE:JCI), we transform the environments where people live, work, learn and play. As the global leader in smart, healthy and sustainable buildings, our mission is to reimagine the performance of buildings to serve people, places and the planet. Building on a proud history of nearly 140 years of innovation, we deliver the blueprint of the future for industries such as healthcare, schools, data centers, airports, stadiums, manufacturing and beyond through OpenBlue, our comprehensive digital offering. Today, with a global team of 100,000 experts in more than 150 countries, Johnson Controls offers the world's largest portfolio of building technology and software as well as service solutions from some of the most trusted names in the industry.

Visit www.johnsoncontrols.com for more information and follow [@JohnsonControls](https://twitter.com/JohnsonControls) on social platforms.

Australia

Tel: 1300 725 688

Email: fdp.customerservice.anz@jci.com

New Zealand

Tel: +64 9 635 0617

Email: fdp.customerservice.anz@jci.com

Visit www.vigilant-fire.com.au for more information.

The power behind **your mission**

