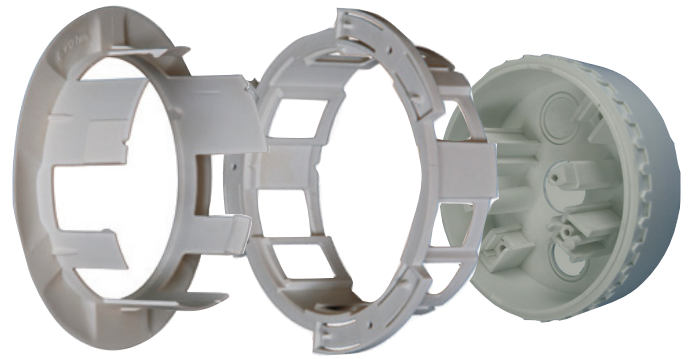


CTATime Saver

Generation 6 *MX* Detection Range

Features

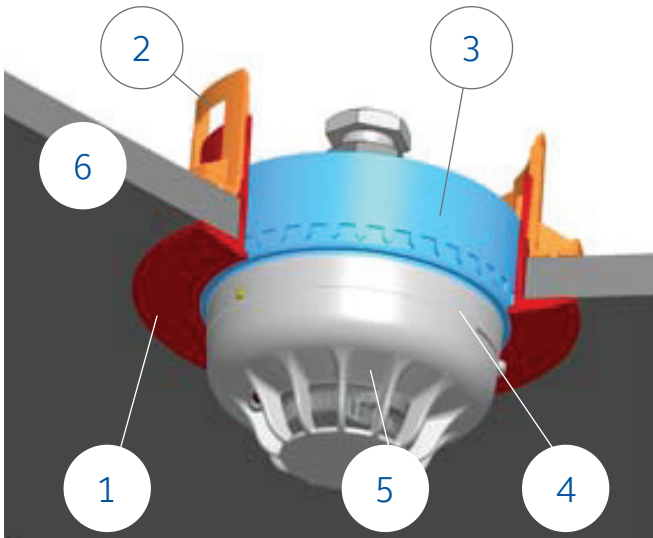
- Quick and easy to install
- Reduce installation time by up to 30%
- Allows detector commissioning and testing before ceiling installation
- Reduce installer injury risk



BEZEL

CLAMP

BACK BOX



Specifications

Dimensions (H x Dia)
Weight
Ceiling Cutout
Material
Colour
Ambient Temperature
Storage Temperature
Relative Humidity

Adaptor	Adaptor Plate
52 x 165 mm	8 x 111 mm
232g	40g
127mm (30mm max. tile)	
Flame Retardant ABS	
White	
-25°C to +70°C	
-40°C to +80°C	
10% to 95% (non cond.)	

Part Numbers

517.050.060
- 517.050.056
- 517.050.057

Ceiling Tile Adaptor Kit
Ceiling Tile Adaptor Back Box
Ceiling Tile Adaptor Bezel
and Clamp
Ceiling Tile Adaptor Plate

517.050.058

Description

The Ceiling Tile Adaptor (CTA) is used to prepare a ceiling tile to be able to accept a complete base and detector assembly. It comprises a Bezel (1), Clamp (2) and Back Box (3). Traditionally the detector base (4) is installed without the detector head (5), as mounting screws must be inserted through the back plate of the base. The CTA can save time by allowing a system to be installed and commissioned before the ceiling (6) is installed. Once the ceiling is installed the base and detector assembly can be pulled into place without the need for disassembly and re-testing.

The adaptor can be ordered as a complete kit or as individual items (clamping rings and back box). Full details are provided in the leaflet packaged with the adaptor kit.

The Ceiling Tile Adaptor Plate is used when a beacon base or sounder base is fixed to the Ceiling Tile Adaptor Back Box.

Fixing

The Ceiling Tile Adaptor allows for a convenient two-stage installation.

The electrical installation is carried out by the fire alarm system installer. The detector is pre-fitted to the base and commissioned. The detector assembly can remain suitably supported, with dust cover fitted, until the suspended ceiling is fitted.



Snapping the detector base to the CTA Back Box

The ceiling installation can be completed by the ceiling installer, without disturbing the detector assembly. As the ceiling installation does not require the separation of the detector from the base, the pre-commissioning remains valid.



Pull the detector and back box assembly through the cutout into position on the ceiling tile

Installation

The detector wiring is fed through a 20 or 25mm cable gland and the corresponding knock-out in the back box to the detector base. With the detector base wired to the alarm system, the Ceiling Tile Adaptor back box is connected to the detector base with a simple snap-fit.

The electrical installation is carried out by the fire alarm system installer. The detector is fitted to the base and commissioned. The detector assembly can remain hanging until the suspended ceiling is fitted.

Sounder Base

Where a sounder base is required, an Adaptor Plate must be used (ordered separately). First clip the adaptor plate to the back box, then secure the mounting flange of the sounder base to the back box.



Ceiling Tile Adaptor Plate for Sounder base

Australia Level 3, 95 Coventry Street Southbank VIC 3006 Tel: 1300 725 688 Tel: +61 3 9313 9700 Email: fdp.customerservice.anz@jci.com
New Zealand 17 Mary Muller Drive Hillsborough PO Box 19-545 Woolston Christchurch 8241 Tel: +64 9 635 0617 Email: tspsales.nz@jci.com

VIGILANT, a respected registered trademark of Johnson Controls, is a technology leader in the Australian and New Zealand fire detection markets with AS and NZS product approvals. The VIGILANT product line includes a comprehensive range of MX TECHNOLOGY fire detection products and the market-leading QE90 voice evacuation systems. VIGILANT product is widely supported throughout Australia and New Zealand by a network of installation companies, service companies and distributors.

© 2017 Johnson Controls. All rights reserved. All specifications and other information shown were current as of document revision date and are subject to change without notice.

CTAdatVIG1710 October 2017

www.vigilant-fire.com.au