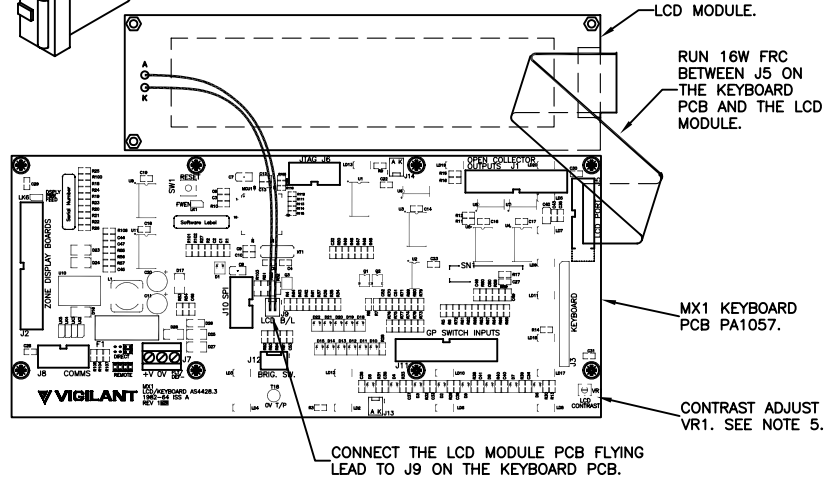
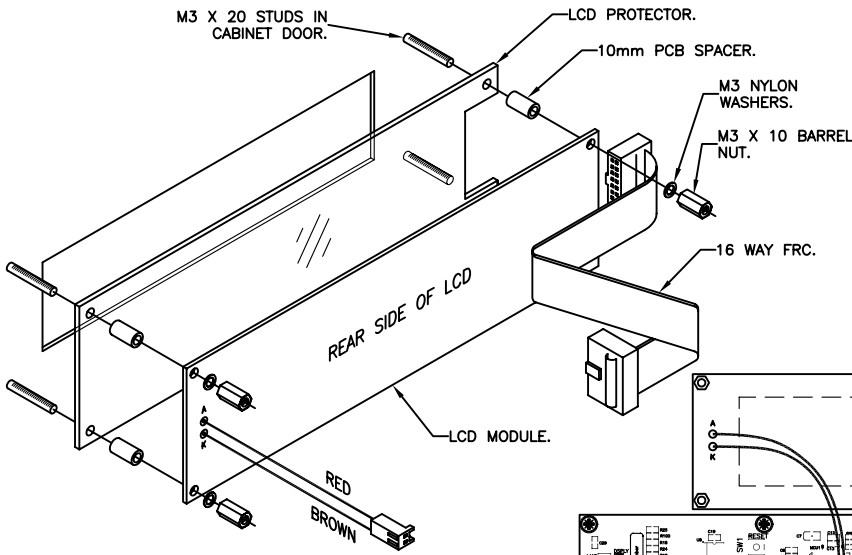


INSTALLATION INSTRUCTIONS FOR FITTING WITH PA1057:

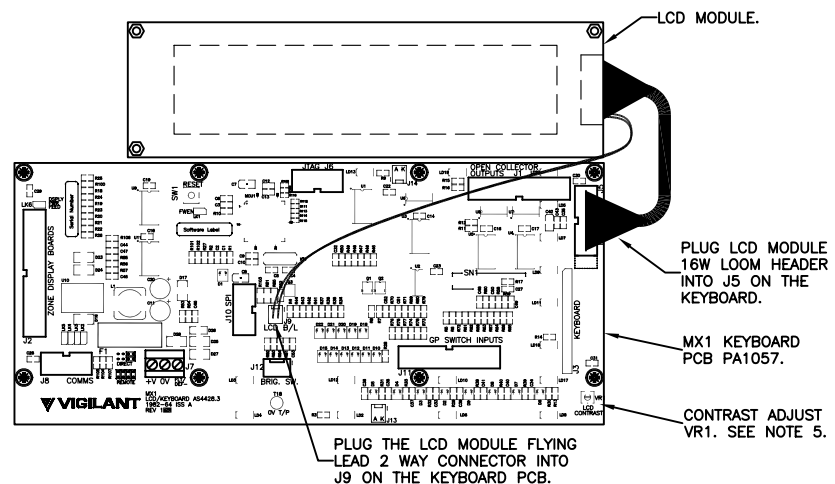
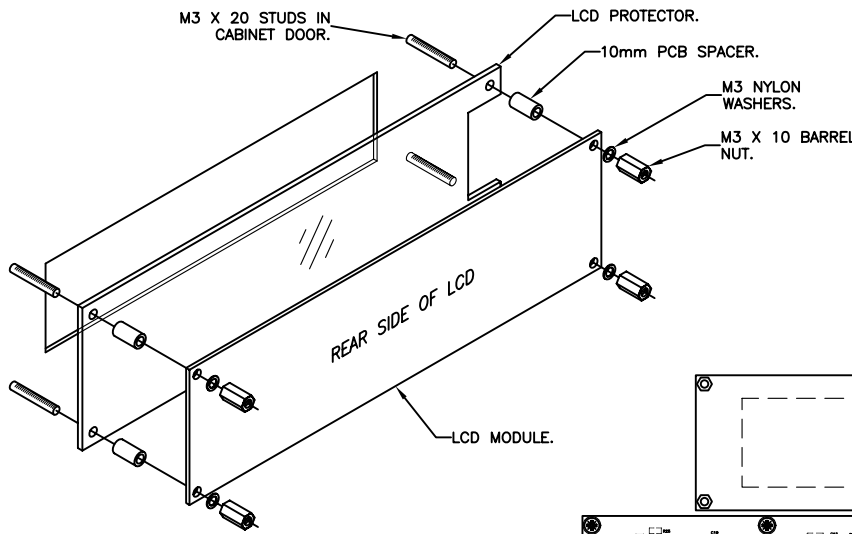
1. REMOVE THE DAMAGED OR FAULTY LCD MODULE AND 16 WAY FRC FROM THE DOOR.
2. IF REQUIRED FIT THE REPLACEMENT LCD PROTECTOR AND THE 10mm LONG PLASTIC SPACERS OVER THE 4 OFF M3 X 20 LONG LCD MODULE MOUNTING STUDS PROTRUDING FROM THE CABINET DOOR.
3. USING ANTI-STATIC PRECAUTIONS, FIT THE REPLACEMENT LCD MODULE ONTO THESE STUDS AS SHOWN WITH FASTENERS SUPPLIED. CONNECT THE NEW 16 WAY FRC TO THE KEYBOARD PCB AS SHOWN.
4. CONNECT THE NEW LCD MODULE FLYING LEAD TO THE KEYBOARD PCB AS SHOWN.
5. THE CONTRAST SETTING FOR THE MX1 LCD HAS BEEN PRESET IN THE FACTORY TO PROVIDE ADEQUATE VISIBILITY OVER THE MX1'S FULL OPERATING TEMPERATURE RANGE. SETTING OF THE CONTRAST TO SUIT A PARTICULAR INSTALLATION IS POSSIBLE USING CONTROL VR1 ON THE PA1057. HOWEVER, DOING SO MAY RESULT IN THE LCD NOT HAVING ADEQUATE VISIBILITY OVER THE FULL RANGE OF OPERATING TEMPERATURE.
6. TEST PANEL FUNCTIONS CORRECTLY.



LCD WITH 16W FRC LOOM INSTRUCTIONS FOR FITTING WITH PA1057

INSTALLATION INSTRUCTIONS FOR FITTING WITH PA1057:

1. UNPLUG 16 WAY FRC FROM KEYBOARD PCB AND REMOVE THE DAMAGED OR FAULTY LCD MODULE FROM THE DOOR.
2. IF REQUIRED FIT THE REPLACEMENT LCD PROTECTOR AND THE 10mm LONG PLASTIC SPACERS OVER THE 4 OFF M3 X 20 LONG LCD MODULE MOUNTING STUDS PROTRUDING FROM THE CABINET DOOR.
3. USING ANTI-STATIC PRECAUTIONS, FIT THE REPLACEMENT LCD MODULE ONTO THESE STUDS AS SHOWN WITH FASTENERS SUPPLIED. CONNECT THE LCD 16 WAY LOOM HEADER TO THE KEYBOARD PCB AS SHOWN.
4. CONNECT THE NEW LCD MODULE 2 WAY FLYING LEAD CONNECTOR TO THE KEYBOARD PCB AS SHOWN.
5. THE CONTRAST SETTING FOR THE MX1 LCD HAS BEEN PRESET IN THE FACTORY TO PROVIDE ADEQUATE VISIBILITY OVER THE MX1'S FULL OPERATING TEMPERATURE RANGE. SETTING OF THE CONTRAST TO SUIT A PARTICULAR INSTALLATION IS POSSIBLE USING CONTROL VR1 ON THE PA1057. HOWEVER, DOING SO MAY RESULT IN THE LCD NOT HAVING ADEQUATE VISIBILITY OVER THE FULL RANGE OF OPERATING TEMPERATURE.
6. TEST PANEL FUNCTIONS CORRECTLY.



LCD WITH FLYING LEADS INSTRUCTIONS FOR FITTING WITH PA1057

CONFIDENTIAL: THIS DOCUMENT MUST NOT BE COPIED NOR THE CONTENTS PASSED ON TO ANY THIRD PARTY WITHOUT THE CONSENT OF THE COMPANY.

UNLESS OTHERWISE STATED: ALL DIMENSIONS IN MILLIMETRES. DO NOT SCALE. TOLERANCES ARE TO BE: 1 DECIMAL PLACE ±0.5, 2 DECIMAL PLACES ±0.3, 3 DECIMAL PLACES ±0.1

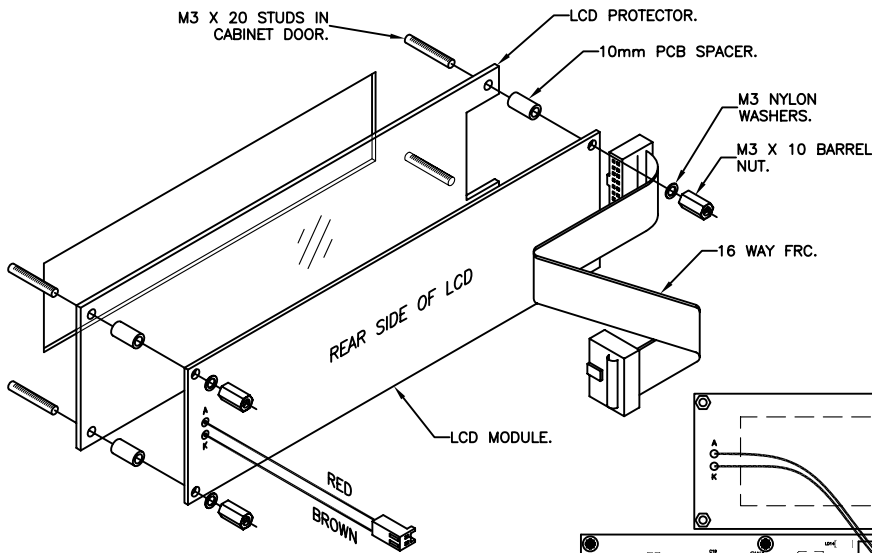
3rd ANGLE PROJECTION

ISS/REV	AMENDMENTS	ECO	DRN	CHKD	AUTH	APVD	DATE
A	ORIGINAL	-	KJS	LSC	LSC	DP	2-3-04
B	UPDATED LCD PCB TO SHOW POSITION OF J8 ON PA1057	3862	PAH	LSC	LSC	DSCP	10-8-07
C	NOTE 4 UPDATED. NOTES 5 & 6 ADDED. LCD MODULE LEAD CONNECTION UPDATED.	ECS1336	KJS	GEL	LSC	DP	13-3-09
D	LCD WITH FLYING LEAD MOUNTING DETAILS ADDED	4090	KJS	GEL	LSC	DP	18-12-09
E	LCD SPACERS WERE 8mm LONG.	4116	KJS	GEL	LSC	DP	9-3-10
F	NOTES UPDATED.	4167	KJS	LSC	RC	DP	20-9-10

tyco / Safety Products

TYCO SAFETY PRODUCTS
17 MARY MULLER DRIVE
P.O. BOX 19545
CHRISTCHURCH, PH: +64 3 3895096
NEW ZEALAND. FAX: +64 3 3895938

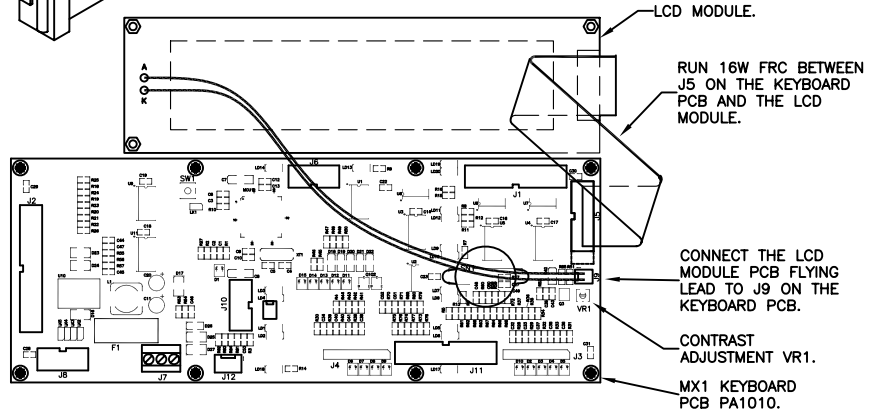
MX1 LCD MODULE INSTAL. INSTRUCTIONS LITERATURE MASTER			
DRAWING No: 1982-30		SHEET 1 of 2	
A4	ISS/REV	F	PART No: LT0347



LCD WITH 16W FRC LOOM
INSTRUCTIONS FOR
FITTING WITH PA1010

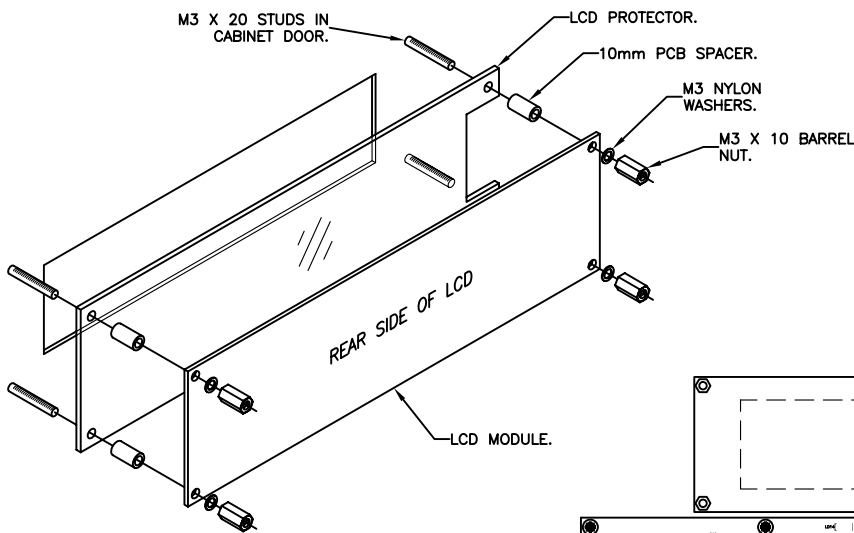
INSTALLATION INSTRUCTIONS FOR FITTING WITH PA1010:

1. REMOVE THE DAMAGED OR FAULTY LCD MODULE AND 16 WAY FRC FROM THE DOOR.
2. IF REQUIRED FIT THE REPLACEMENT LCD PROTECTOR AND THE 10mm LONG PLASTIC SPACERS OVER THE 4 OFF M3 X 20 LONG LCD MODULE MOUNTING STUDS PROTRUDING FROM THE CABINET DOOR.
3. USING ANTI-STATIC PRECAUTIONS, FIT THE REPLACEMENT LCD MODULE ONTO THESE STUDS AS SHOWN WITH FASTENERS SUPPLIED. CONNECT THE NEW 16 WAY FRC TO THE KEYBOARD PCB AS SHOWN.
4. CONNECT THE NEW LCD MODULE FLYING LEAD TO THE KEYBOARD PCB AS SHOWN.
5. TEST PANEL FUNCTIONS CORRECTLY.
6. CONTRAST MAY BE ADJUSTED USING VR1.

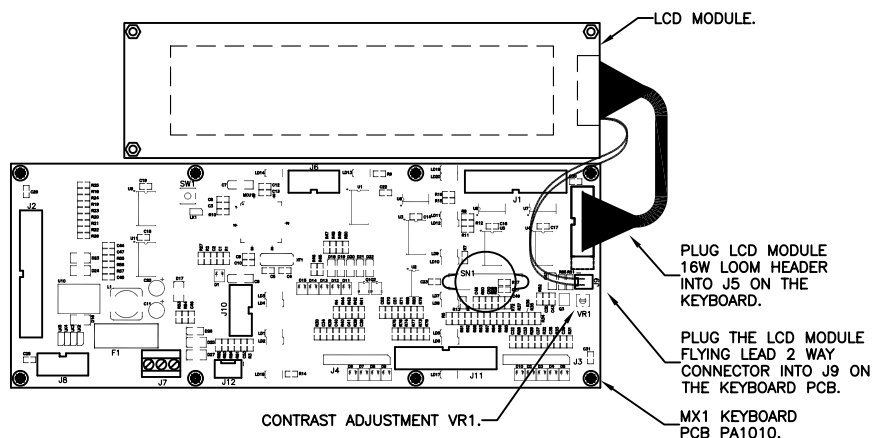


INSTALLATION INSTRUCTIONS FOR FITTING WITH PA1010:

1. UNPLUG 16 WAY FRC FROM KEYBOARD PCB AND REMOVE THE DAMAGED OR FAULTY LCD MODULE FROM THE DOOR.
2. IF REQUIRED FIT THE REPLACEMENT LCD PROTECTOR AND THE 10mm LONG PLASTIC SPACERS OVER THE 4 OFF M3 X 20 LONG LCD MODULE MOUNTING STUDS PROTRUDING FROM THE CABINET DOOR.
3. USING ANTI-STATIC PRECAUTIONS, FIT THE REPLACEMENT LCD MODULE ONTO THESE STUDS AS SHOWN WITH FASTENERS SUPPLIED. CONNECT THE LCD 16 WAY LOOM HEADER TO THE KEYBOARD PCB AS SHOWN.
4. CONNECT THE NEW LCD MODULE 2 WAY FLYING LEAD CONNECTOR TO THE KEYBOARD PCB AS SHOWN.
5. THE CONTRAST SETTING FOR THE MX1 LCD HAS BEEN PRESET IN THE FACTORY TO PROVIDE ADEQUATE VISIBILITY OVER THE MX1'S FULL OPERATING TEMPERATURE RANGE. SETTING OF THE CONTRAST TO SUIT A PARTICULAR INSTALLATION IS POSSIBLE USING CONTROL VR1 ON THE PA1010. HOWEVER, DOING SO MAY RESULT IN THE LCD NOT HAVING ADEQUATE VISIBILITY OVER THE FULL RANGE OF OPERATING TEMPERATURE.
6. TEST PANEL FUNCTIONS CORRECTLY.



LCD WITH FLYING LEADS
INSTRUCTIONS FOR
FITTING WITH PA1010



CONFIDENTIAL: THIS DOCUMENT MUST NOT BE COPIED NOR THE CONTENTS PASSED ON TO ANY THIRD PARTY WITHOUT THE CONSENT OF THE COMPANY.

UNLESS OTHERWISE STATED: ALL DIMENSIONS IN MILLIMETRES. DO NOT SCALE. TOLERANCES ARE TO BE: 1 DECIMAL PLACE ± 0.5 , 2 DECIMAL PLACES ± 0.3 , 3 DECIMAL PLACES ± 0.1

3rd ANGLE PROJECTION

ISS/REV	AMENDMENTS	ECO	DRN	CHKD	AUTH	APVD	DATE
A	ORIGINAL	ES1336	KJS	GEL	LSC	DP	16-3-09
B	LDO063 ASSY INSTRUCTIONS ADDED.	4080	KJS	GEL	LSC	DP	21-12-09
C	LCD SPACERS WERE 8mm LONG.	4116	KJS	GEL	LSC	DP	9-3-10
D	NOTES UPDATED.	4167	KJS	LSC	RC	DP	20-9-10

tyco / Safety Products

TYCO SAFETY PRODUCTS
17 MARY MULLER DRIVE
P.O. BOX 19545
CHRISTCHURCH, PH: +64 3 3895096
NEW ZEALAND. FAX: +64 3 3895938

MX1 LCD MODULE INSTAL. INSTRUCTIONS LITERATURE MASTER			
DRAWING No: 1982-30		SHEET 2 of 2	
A4	ISS/REV	D	PART No: LT0347