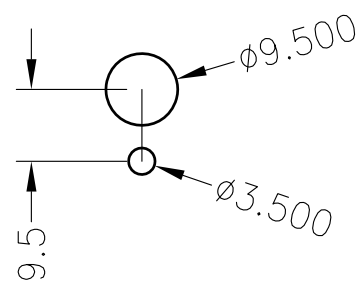


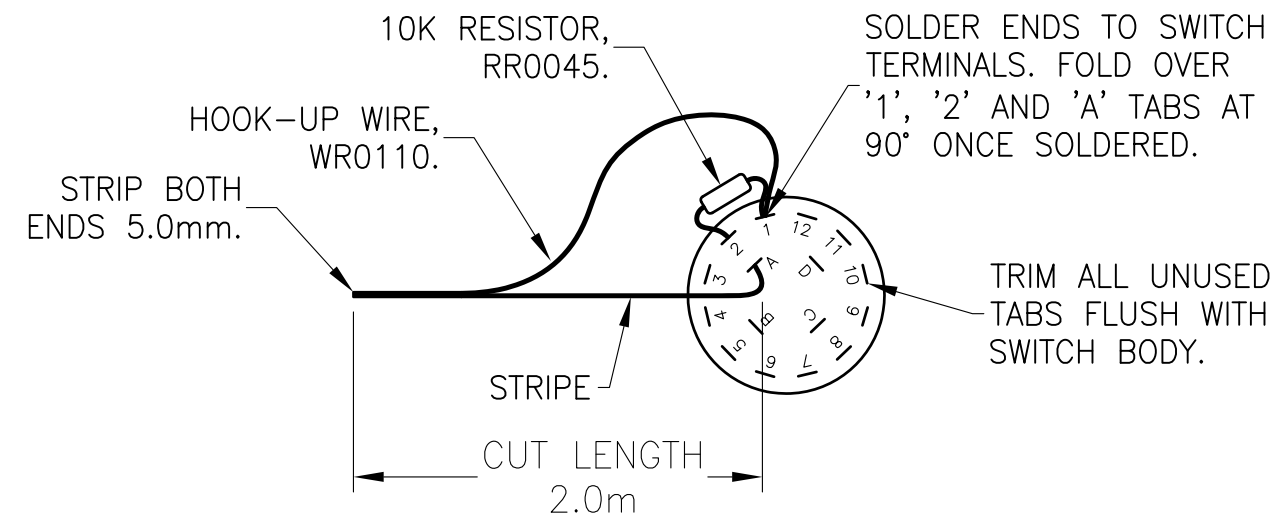
EXPLODED SIDE VIEW OF SWITCH ASSEMBLED IN PANEL

ASSEMBLY NOTES:

1. DRILL SWITCH MOUNTING HOLES IN METALWORK IF NOT ALREADY PRESENT. USE HOLE DIMENSIONS SHOWN BELOW.
2. ALIGN LABEL WITH SWITCH LARGE HOLE. CUT LABEL AROUND HOLE TO ALLOW SWITCH TO PASS THROUGH.
3. WHEN FITTING SWITCH TAB WASHER, TAB MUST BE IN POSITION 3.



SWITCH MOUNTING HOLE PATTERN



SWITCH WIRING DETAIL

FACTORY NOTES:

1. KEEP RESISTOR LEADS SHORT AS SHOWN.
2. WHEN ASSEMBLY IS COMPLETE, FACTORY TO TEST AS PER P/4 FILE.
3. IF SWITCH IS NOT BEING INSTALLED, ROLL UP TWIN STRANDED WIRE AND TAPE WITH MASKING TAPE.
4. PLACE THE FOLLOWING IN PLASTIC BAG (PK0002). TAPE BAG CLOSED WITH MASKING TAPE:
  - 1 X SWITCH ASSEMBLY,
  - 1 X SWITCH KNOB GREEN CAP (SW0132),
  - 1 X SWITCH KNOB (SW0143),
  - 1 X SWITCH LABEL (LB0580),
  - 2 OFF CABLE TIE (SU0020),
  - 2 OFF CABLE TIE BASE (SU0099),
  - 1 X SHIM WASHER, (WA0034),
  - 1 X LITERATURE (LT0402), FOLDED UP.

CONFIDENTIAL: THIS DOCUMENT MUST NOT BE COPIED NOR THE CONTENTS PASSED ON TO ANY THIRD PARTY WITHOUT THE CONSENT OF THE COMPANY.

UNLESS OTHERWISE STATED: ALL DIMENSIONS IN MILLIMETRES. DO NOT SCALE. TOLERANCES ARE TO BE: 1 DECIMAL PLACE  $\pm 0.5$ , 2 DECIMAL PLACES  $\pm 0.3$ , 3 DECIMAL PLACES  $\pm 0.1$

3rd ANGLE PROJECTION

ISS/REV	AMENDMENTS	ECO	DRN	CHKD	AUTH	APVD	DATE
A	ORIGINAL	-	KJS	LSC	RC	DP	4-5-06
B	NOTE 4 UPDATED	4470	KJS	GEL	LSC	DP	22-3-13

**tyco**  
Fire Protection Products

TYCO FIRE PROTECTION PRODUCTS  
17 MARY MULLER DRIVE  
P.O. BOX 19545  
CHRISTCHURCH, PH: +64 3 3895096  
NEW ZEALAND. FAX: +64 3 3895938

4100  
**T-GEN 50 ROTARY SWT NO BRKT  
MECHANICAL ASSEMBLY**

DRAWING No: 1976-179 SHEET 1 of 1

A3	ISS/REV B	PART No: LT0402
----	-----------	-----------------