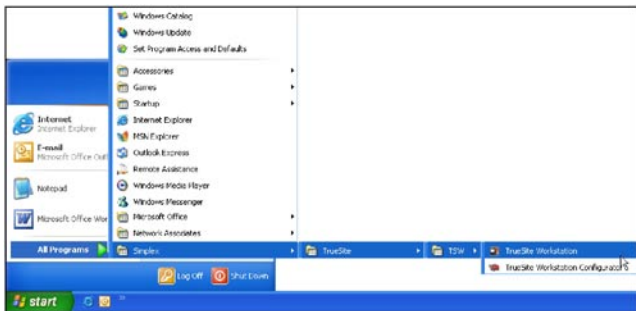
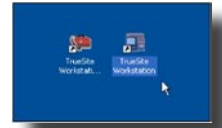


Launch TrueSite Workstation



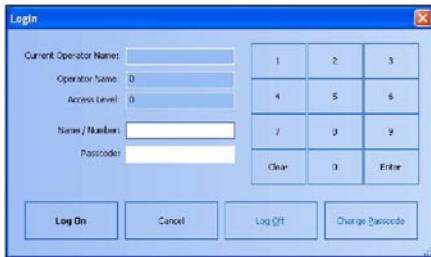
OR

Launch TrueSite Workstation by clicking on the TrueSite Workstation icon on the desktop



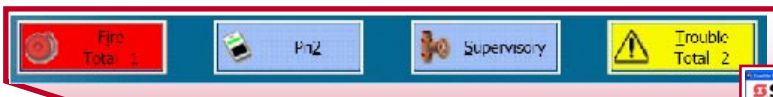
Launch TrueSite Workstation by clicking
Start -> All Programs -> Simplex -> TrueSite -> TrueSite Workstation -> TrueSite Workstation

Log On to TrueSite Workstation

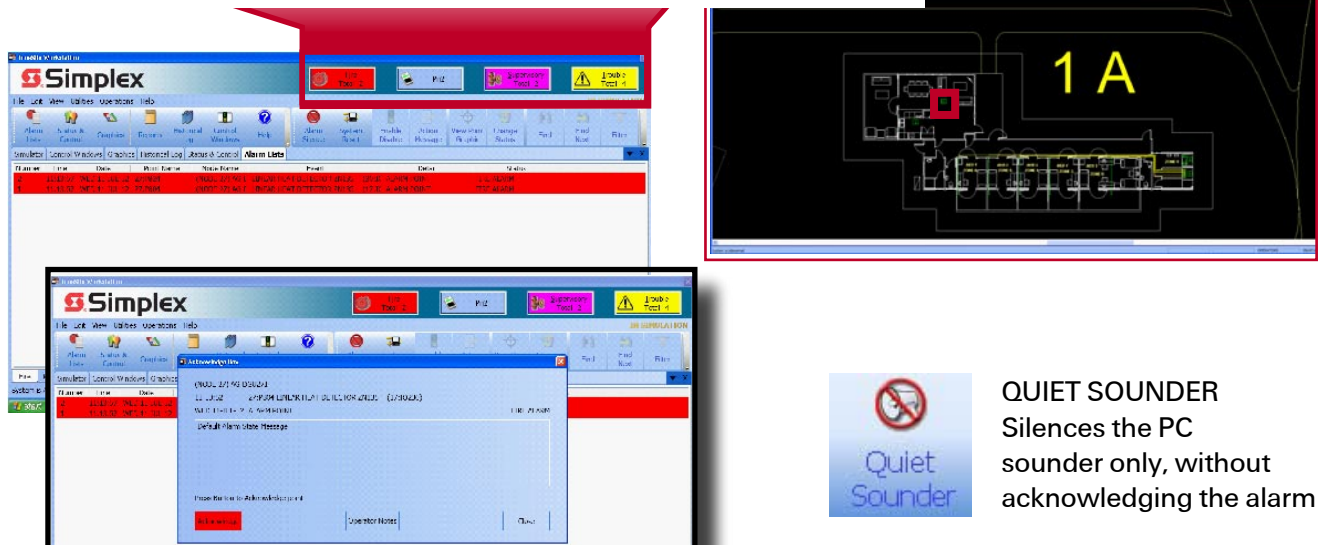



Log On
 Enter your name/number
 Enter your passcode
 Click Log On

Silence/Acknowledge Alarm, Fault or Isolate (a supervisory) Event



Silence events by clicking on the flashing icon or (point or device), then



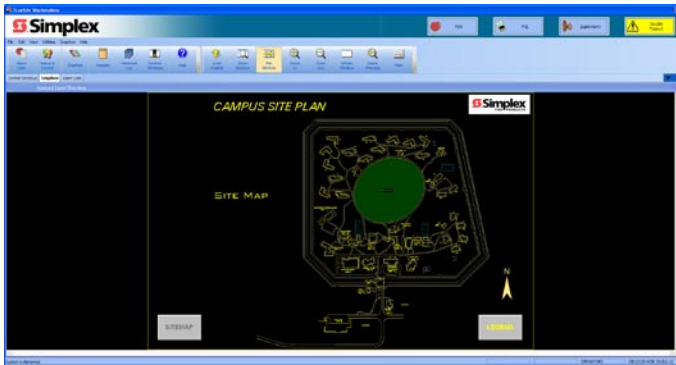


QUIET SOUNDER
 Silences the PC sounder only, without acknowledging the alarm

Acknowledge devices by clicking OK in the dialogue box

Navigate/Zoom in TrueSite Workstation

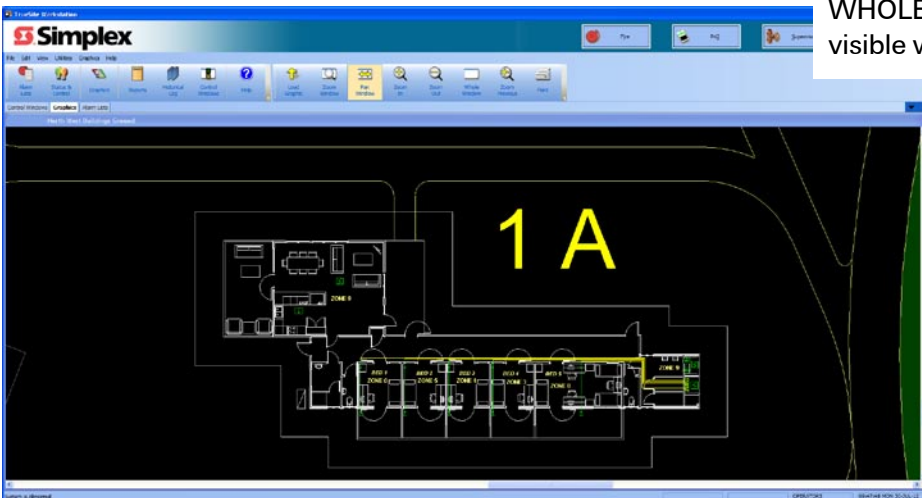
Click on the Graphics tab to reveal the floor plan screens. Select desired area and click to view.



ZOOM IN / ZOOM OUT / ZOOM PREVIOUS / WHOLE WINDOW

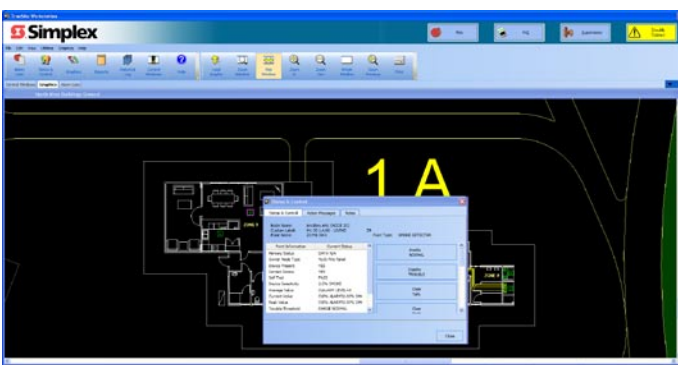
Adjust the size of the Graphics Screen to see required detail.

WHOLE WINDOW makes the entire screen visible within the graphics window



Status & Control

Individual point status can be controlled and viewed by clicking on a point on the Graphics Screen

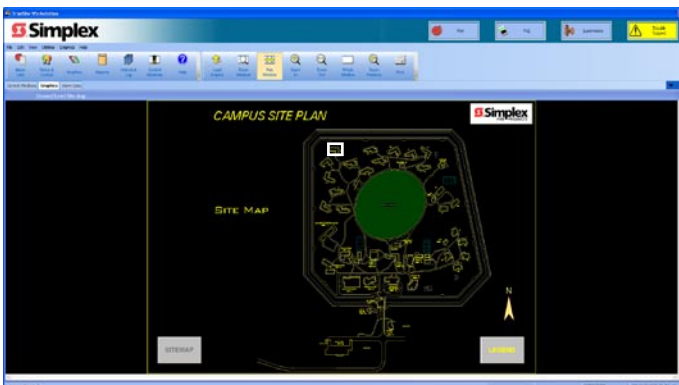


Click on a point and select the desired parameter in the dialogue box to configure points within the network

Enable/Disable

Individual points may be disabled for maintenance or other purposes.

The Enable/Disable function allows you to Enable or Disable a point in the TrueSite Workstation



DISABLE

- From a floor plan, select and highlight a point
- Click Enable/Disable
This will disable a point and bring up a fault on the system
- The Disable point command is sent to the panel
- A trouble condition is created

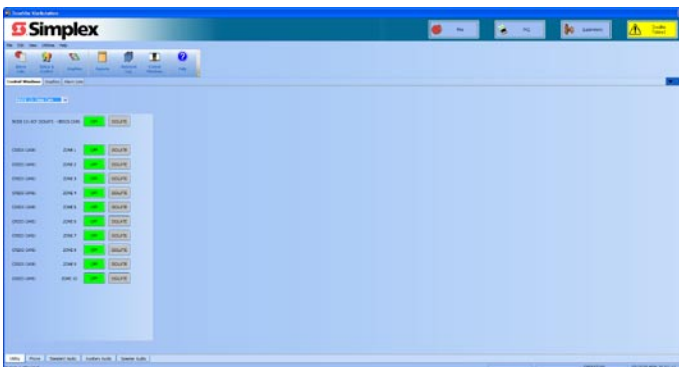
ENABLE

- Select and highlight a point
- Click Enable/Disable
- A countdown dialogue box appears - wait for countdown or click Enable Immediate to stop the countdown
- The Enable point command is sent to the panel

Isolate/De-isolate

Individual zones may be Isolated for maintenance or other purposes.

The Isolate/De-isolate function allows you to Isolate or De-isolate a zone in the TrueSite Workstation



ISOLATE

To Isolate a zone click on the Control Windows tab and a list of all the buildings and associated controls will appear.

Select the desired zone and press the Isolate button corresponding to that zone. This will cause a supervisory signal to be generated which can be acknowledged and viewed (refer to Silence/Acknowledge events on page 1), and the button will change colour to purple to indicate its Isolated state.

DE-ISOLATE

To De-isolate a zone click on the Control Windows tab and a list of all the buildings and associated controls will appear.

Select the desired zone and press the Off button corresponding to that zone. This will clear a supervisory signal and the button will change colour to green to indicate its De-isolated state..

